

Koltek Track Profile KOT106

Hydal quality aluminum

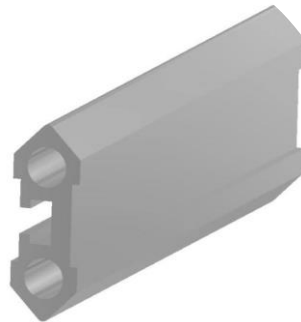
KOT106 track profile is designed for our Interlift climbing trolleys. With this track you will be able to design multi-level track systems and let the track follow inclining and curved profiles of the building.

With max point load 400 Kg you may have up to 4,5 meter span between supporting brackets and with point load 600 Kg up to 3 meter span with track profile type KOT106

Trolleys that fit the track:

- HA 600-106
- HAR 600-106
- HAEL 600-106
- IL 400

The aluminum alloy used in the Koltek®'s systems; the track produced by Hydal is stronger than most of the aluminum tracks available in the market today. You will be able to increase the span between the brackets and you will reduce the installation costs with less brackets and shorter time of installation. The natural anodized surface protects it from corroding and will not easily be scratched or damaged during handling operations.



Koltek®

Koltek AS

Industriveien 17, 1890 Rakkestad, Norway

Tlf +47 400 34 536

Email koltek@koltek.no www.koltek.no

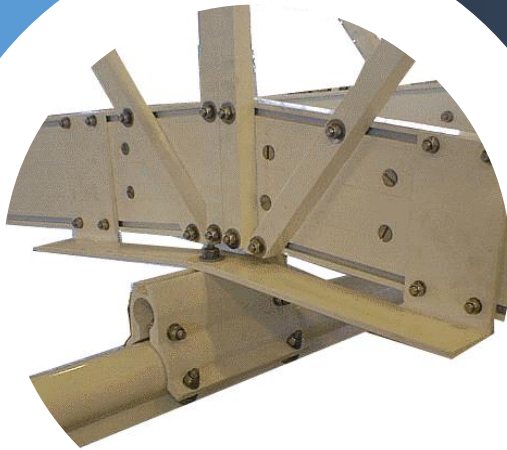
Koltek Track Profile KOT108

Hydal quality aluminum

KOT108 track profile is mostly used with heavy-duty ladders and gantries. With max point load 600 Kg you may have max 2-meter span between supporting brackets for track profile KOT108

Typical uses:

- Traversing gantries
- Traversing ladders



The aluminum alloy used in the Koltek®'s systems; the track produced by Hydal is stronger than most of the aluminum tracks available in the market today. You will be able to increase the span between the brackets and you will reduce the installation costs with less brackets and shorter time of installation. The natural anodized surface protects it from corroding and will not easily be scratched or damaged during handling operations.



Koltek®

Koltek AS
Industriveien 17, 1890 Rakkestad, Norway
Tlf +47 400 34 536
Email koltek@koltek.no www.koltek.no

Koltek Track Profile KOT117

Hydal quality aluminum

KOT117 track profile is mostly used with light weight ladders and gantries.

Typical uses:

- Traversing gantries
- Traversing ladders



The aluminum alloy used in the Koltek®'s systems; the track produced by Hydal is stronger than most of the aluminum tracks available in the market today. You will be able to increase the span between the brackets and you will reduce the installation costs with less brackets and shorter time of installation. The natural anodized surface protects it from corroding and will not easily be scratched or damaged during handling operations.



Koltek®

Koltek AS
Industriveien 17, 1890 Rakkestad, Norway
Tlf +47 400 34 536
Email koltek@koltek.no www.koltek.no

Koltek Track Profile KOT118

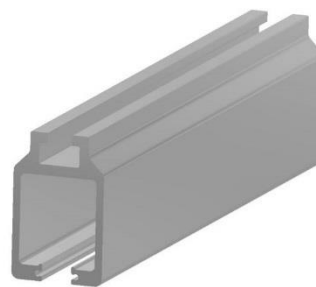
Hydal quality aluminum

KOT118 track profile is mostly used on installations with light weight ladders and gantries. With max point load 400 Kg you may have max 3-meter span between supporting brackets for this track profile KOT118.

Trolleys that fit the track:

- HA 400-118
- HAR 400-118
- HAEL 400-118

The aluminum alloy used in the Koltek®'s systems; the track produced by Hydal is stronger than most of the aluminum tracks available in the market today. You will be able to increase the span between the brackets and you will reduce the installation costs with less brackets and shorter time of installation. The natural anodized surface protects it from corroding and will not easily be scratched or damaged during handling operations.



Koltek®

Koltek AS
Industriveien 17, 1890 Rakkestad, Norway
Tlf +47 400 34 536
Email koltek@koltek.no www.koltek.no

Koltek Track Profile KOT125

Hydal quality aluminum

KOT125 track profile is mostly used with heavy duty ladders, gantries and platform suspended from horizontal track.

Trolleys that fit the track:

- HA 600-125
- HAR 600-125
- HAEL 600-125

The aluminum alloy used in the Koltek®'s systems; the track produced by Hydal is stronger than most of the aluminum tracks available in the market today. You will be able to increase the span between the brackets and you will reduce the installation costs with less brackets and shorter time of installation. The natural anodized surface protects it from corroding and will not easily be scratched or damaged during handling operations.



Koltek®

Koltek AS
Industriveien 17, 1890 Rakkestad, Norway
Tlf +47 400 34 536
Email koltek@koltek.no www.koltek.no

Koltek Track Profile KOT126

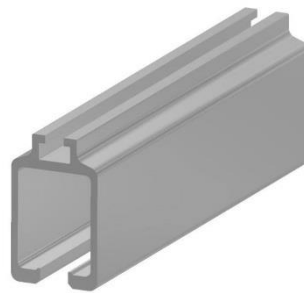
Hydal quality aluminum

KOT126 track profile fits perfect under eaves. The track is also often integrated in the ceiling. Ideal if you want to paint the track as the trolley wheels are running internally in the track.

Trolleys that fit the track:

- HA 600-126
- HAR 600-126
- KTEL 600-126
- CT 600-126

The aluminum alloy used in the Koltek®'s systems; the track produced by Hydal is stronger than most of the aluminum tracks available in the market today. You will be able to increase the span between the brackets and you will reduce the installation costs with less brackets and shorter time of installation. The natural anodized surface protects it from corroding and will not easily be scratched or damaged during handling operations.



Koltek®

Koltek AS

Industriveien 17, 1890 Rakkestad, Norway

Tlf +47 400 34 536

Email koltek@koltek.no www.koltek.no

Koltek Track Profile KOT170

Hydal quality aluminum

KOT170 track profile is for horizontal track systems. This track has the same exterior design as our KOT125 monorail profile but with a lower material weight – which makes it easier to handle and gives a lower material cost. The installation method is the same as with all other Koltek® monorail systems.

The KOT170 monorail track can be used when there is max point load 450 Kg and Max 2.7-meter CC between supporting brackets.

Trolleys that fit the track:

- HA 450-170
- HAR 450-170
- HAEL 450-170

The aluminum alloy used in the Koltek®'s systems; the track produced by Hydal is stronger than most of the aluminum tracks available in the market today. You will be able to increase the span between the brackets and you will reduce the installation costs with less brackets and shorter time of installation. The natural anodized surface protects it from corroding and will not easily be scratched or damaged during handling operations.



Koltek®

Koltek AS
Industriveien 17, 1890 Rakkestad, Norway
Tlf +47 400 34 536
Email koltek@koltek.no www.koltek.no

Koltek Track Profile KOT246

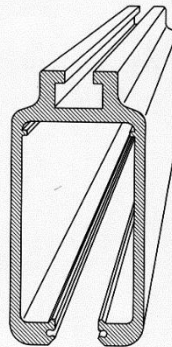
Hydal quality aluminum

KOT246 track profile is used when the span between support brackets are up to 6 meters.

Trolleys that fit the track:

- HA 600-246
- HAR 600-246
- CT 600-246

The aluminum alloy used in the Koltek®'s systems; the track produced by Hydal is stronger than most of the aluminum tracks available in the market today. You will be able to increase the span between the brackets and you will reduce the installation costs with less brackets and shorter time of installation. The natural anodized surface protects it from corroding and will not easily be scratched or damaged during handling operations.



Koltek®

Koltek AS

Industriveien 17, 1890 Rakkestad, Norway

Tlf +47 400 34 536

Email koltek@koltek.no www.koltek.no

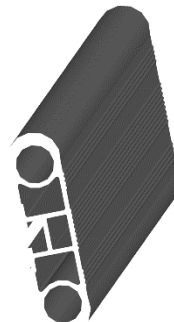
Koltek Track Profile KOT353

Hydal quality aluminum

KOT353 track profile is designed for access systems with long span between bracket support – either as specified for the building or as a strategy to reduce installation cost.

With max point load 750 Kg you may have up to 5,5-meter span between supporting brackets with track profile type KOT353 (safety margin 4,9 with 750 Kg at 3-meter span).

The aluminum alloy used in the Koltek®'s systems; the track produced by Hydal is stronger than most of the aluminum tracks available in the market today. You will be able to increase the span between the brackets and you will reduce the installation costs with less brackets and shorter time of installation. The natural anodized surface protects it from corroding and will not easily be scratched or damaged during handling operations.



Koltek®

Koltek AS
Industriveien 17, 1890 Rakkestad, Norway
Tlf +47 400 34 536
Email koltek@koltek.no www.koltek.no